



# From Knowledge to Action





# Forest & Landscape Denmark



National centre for research, education and advisory services within the fields of forest and forest products, landscape architecture and landscape management, urban planning and urban design





# Vision



Forest & Landscape Denmark will provide the best coherent programme for research, education and communication for the forest, nature, urban and landscape sectors of the twenty-first century with the aim of promoting a sustainable development





# Mission



Forest & Landscape Denmark's activities include:

- research and development
- education and continuing education
- monitoring
- advice and communication
- services to public authorities
- international development and environmental assistance

within the fields of forest, landscape and planning





# Target groups

- Practitioners
- Businesses
- Students
- Public authorities
- The research community





# Core competences

Forest & Landscape Denmark wants to be among the internationally leading institutions within:

- Urban Forestry & Urban Greening
- Environmental benefits from the forests
- Countryside planning and management
- Landscape architecture and urban design
- Bioenergy and biofuels
- Cultivation of Christmas trees and greenery
- Forests and trees in international development and environmental assistance





# Values



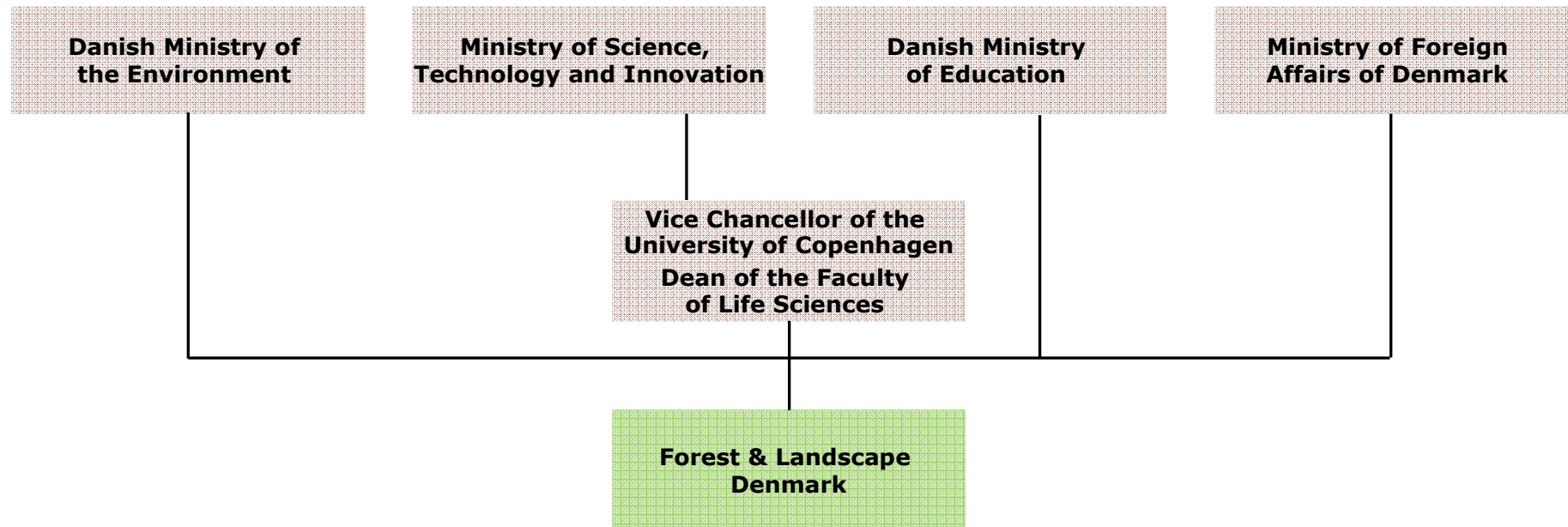
Forest & Landscape Denmark strives, among other things, to:

- create high-quality research, based on academic independence and freedom of methods
- be an attractive place to study, and from where our graduates enjoy a high standing in the labour market
- communicate current, relevant and reliable research-based knowledge to the authorities and sectors which we serve





# Ministerial affiliation







# Starting from

**Royal Veterinary and Agricultural University, Dept. of Economics, and Natural Resources**

Research based education



**Danish Forest and Landscape Research Institute**

Ministry of the Environment

Research based advisory services and dissemination of knowledge

**Danish Forestry College**  
Ministry of Education

Vocational study programmes



**Danida Forest Seed Centre**

Ministry of Foreign Affairs

Development assistance

# Forest & Landscape





# Mergers



Merged into Forest & Landscape Denmark  
on 1 January 2004

- Part of the Royal Veterinary and Agricultural University
- Strengthen competitiveness
- Create coherence in knowledge chain and between the study programmes

University of Copenhagen 1 January 2007

- Faculty of Life Sciences
- Strengthens our academic environments and competitiveness
- Provides new opportunities for interdisciplinary collaboration

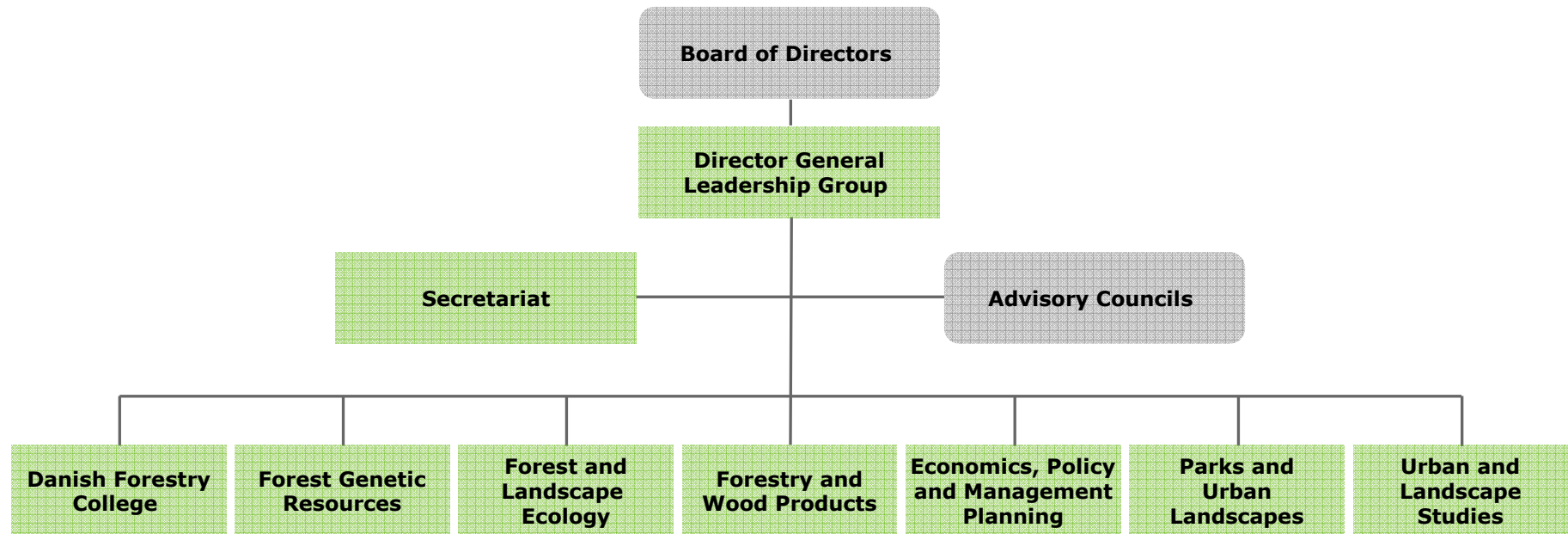
Faculty of SCIENCE 1 January 2013

- Faculty of Life Sciences & Faculty of Natural Sciences
- Forest & Landscape merges with Dpt. of Geology and Geography
- Dpt. of Geosciences, Nature Resources and Planning





# Organisation





# Research



## Core areas

- Forestry and forest products
- Nature and landscapes
- Outdoor recreation and tourism
- Urban and regional development
- Parks and urban landscapes





# Strategic focus areas



- Adapting to climate change
- Water resources and water management
- Sustainable primary production of bioenergy
- Biomass structure and function
- The influence of nature and outdoor recreation on health and welfare
- Methods for and principles behind nature restoration
- New types of planning and management of the physical environment
- Relations between changing urban and rural areas
- Forests, trees and combating poverty





# Innovation

## Examples

- Salt screen
- Biopetrol
- Double-porous filtration





# Vocational study programmes at the Danish Forestry College

- Forest and Landscape Craftsman
- Forest and Landscape Engineer (professional bachelor)
- Parks and Garden Engineer (professional bachelor)
- Vocational training courses in nature preservation, forestry and park management





# Academic Study Programmes



## **BSc programmes**

- Landscape Architecture & Urban Design
- Natural Resources

## **MSc programmes**

- Landscape Architecture
- Landscape Management
- Forest and Nature Management

## **International MSc programmes**

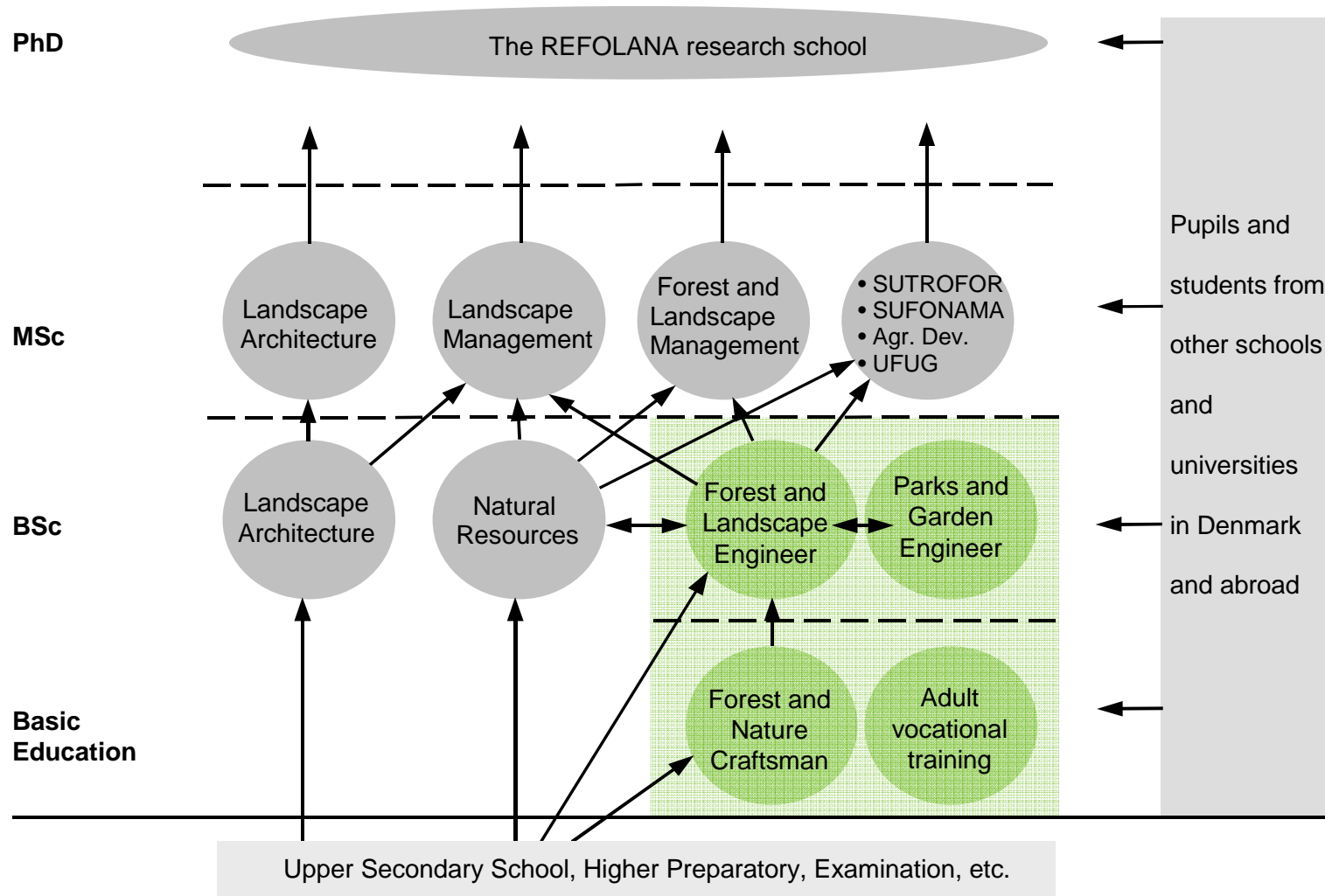
- Sustainable Forest and Nature Management
- Sustainable Tropical Forestry
- (Urban Forestry & Urban Greening)







# Education: Coherence





# Postgraduate training

- The REFOLANA research school





# Qualifying continuing education



- Master in Rural Development and Landscape Management
- Master in Outdoor Recreation
- Diploma in Park Management
- Nature Interpreter





# Academic events



- Courses, conferences, theme days
- Targeted business courses
- Personal development using the forest as learning space
- Renting of facilities





# Communication

**[www.Videntjenesten.dk](http://www.Videntjenesten.dk)**

- Targeted knowledge
- Information sheets
- Newsletters
- Reports and folders
- Academic events
- Advice by telephone and email
- Subscription scheme



**[www.sl.life.ku.dk](http://www.sl.life.ku.dk)**





Videntjenesten &gt; Park og Landskab

## OM PARK OG LANDSKAB

I serien Park og Landskab kan du læse om planlægning og forvaltning, etablering og pleje af bevoksninger, landskabspleje, planter, befæstelser samt arbejdsmiljø.

## SØG I SERIEN

Alle emner



Alle forfattere



Alle år



## Får reetablerer forsk eng - naturpleje - og et hyggeligt indslag på golfbanen

1 2 3 4 5 6



## RÅDGIVNING

Seneste spørgsmål om park og landskab:



Hans Peter Ravn  
**Insektliv og trævalg**



Morten Ingerslev  
**Alternative tømidler**



Iben M. Thomsen  
**Svampesygdom i buksbom**

Stil et spørgsmål >>

## TEGN ABONNEMENT

## TILMELD NYHEDSBREV

## VIDENBLADE

Bekæmpelse af gærdesnerl... >>

Får hjælper greenkeepere... >>

Ukrudtsbekæmpelse: Rigi... >>

Hække i hovedrollen på k... >>

Terapihaven Nacadia >>

Svampesygdom i buksbom >>

Videnblade i denne serie >>

## KURSER OG ARRANGEMENTER

01-12-2011 Urban Open Spaces -  
Quality Pr... >>

14-03-2012  
Kirkegårdskonferencen 2012 >>

Se Alle >>



DET BIOVIDENSKABELIGE FAKULTET



# Services to the authorities



Primarily to the Danish Ministry of the Environment, the Danish Ministry of Climate and Energy and the Ministry of Foreign Affairs of Denmark

## Examples

- Monitoring the condition and development of the forests
- Documenting the forests' contribution to CO<sub>2</sub> reduction
- Sustainable management of natural resources in developing countries





# International development and environmental assistance



- Contribute to improving the living conditions of people in developing countries
- Use, development and protection of genetic resources from trees and forests
- Local management of forests and natural resources
- Close collaboration with local institutions and international partners







# Employees and budget

- Approx. 300 employees
- A total annual budget of approx. DKK 200 million





# Parks and Urban Landscapes

- Plants and Landscape Technology
- Green Space Management
- Landscape Architecture & Urbanism





# Plants and Landscape Technology

Ornamental trees – stress (de-icing salt, drought, compaction)

Weed control without pesticides (lawns and paved areas)

Ecological solutions – Climate Change





# Urban Water Management

- Stormwater management in the urban landscape
- Benchmarking of stormwater treatment facilities
- Concepts for integrated planning and decision support





# Green Space Management



Private – public partnership

Green structure planning

Use and Functions

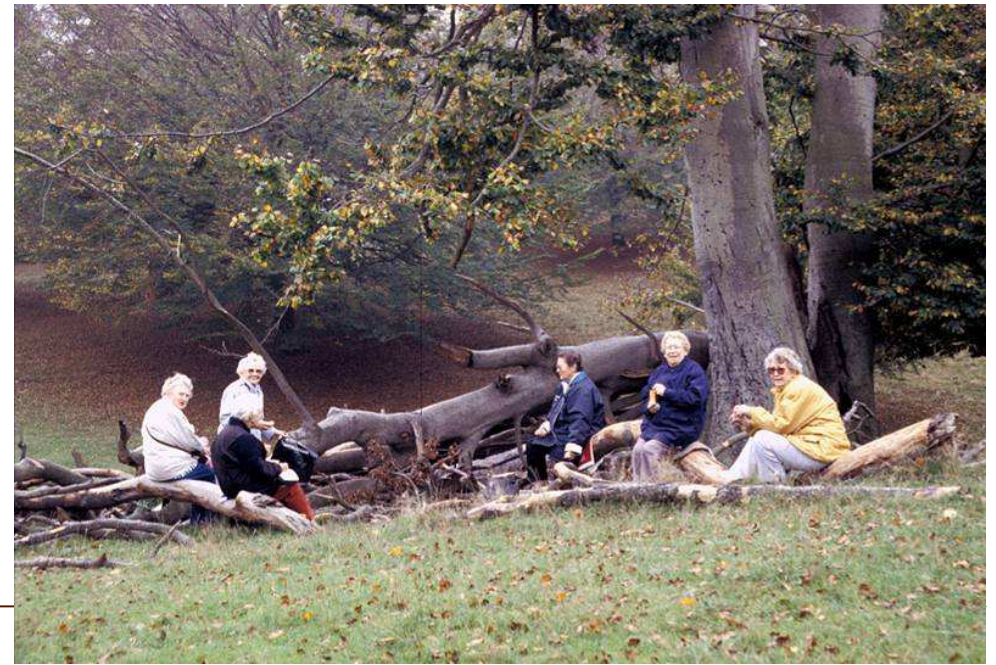
Cemeteries





# Human Health and Wellbeing

- Relationship between use of green areas and stress
- Therapy (gardening, exercise, nature)
- COST E39 »Forests Trees and Human Health and Wellbeing«



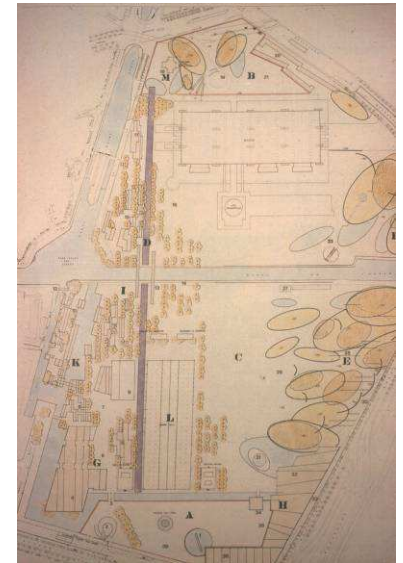


# Landscape Architecture & Urbanism

Information and Communication Technology (ICT)

Theory and history – Danish modernism

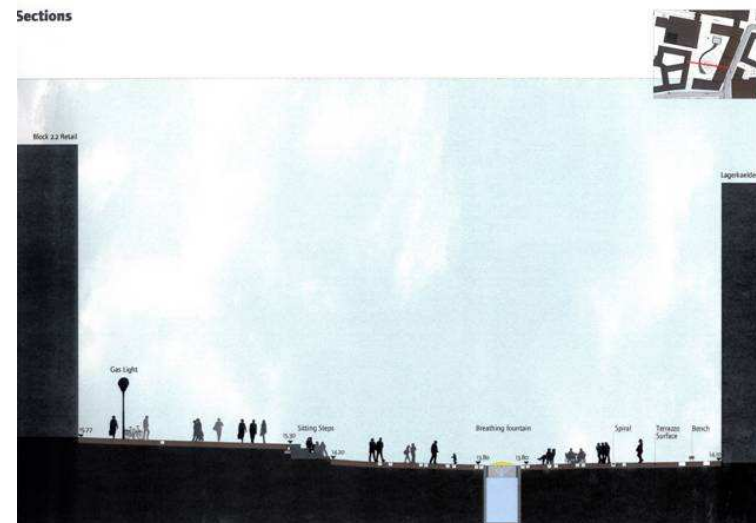
Transformation of Urban Landscapes





# Transformation of the urban landscape

- Preservation strategies
- Landscape based development

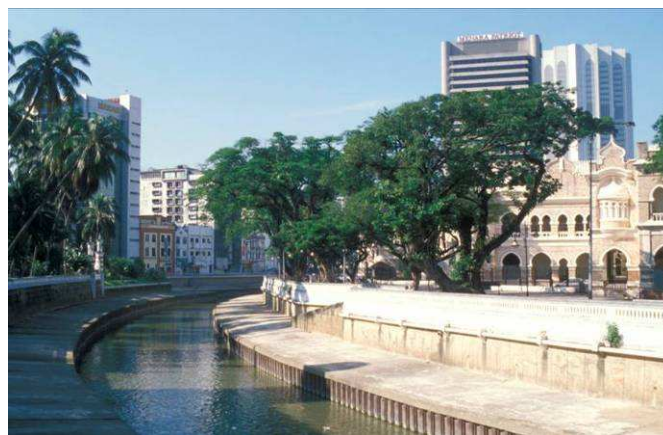
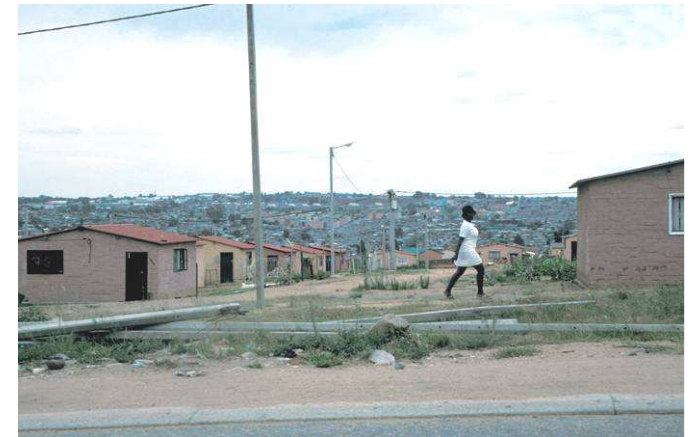






# Urban Greening

- St Petersburg
- Johannesburg
- Kuala Lumpur
- Hangzhou



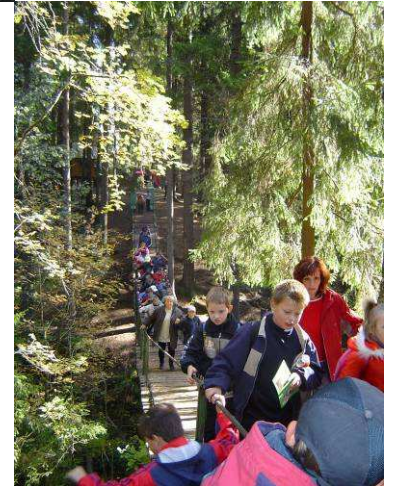


## Education

- Landscape Architect Program
- International Master in Urban Forestry
- Diploma Degree in Park Management

## Dissemination

- Extension Service – 850 subscribers
- Yearly conferences in co-operation with:
  - Ass. of Landscape Architects
  - Danish Chapter of ISA
  - Cemetery Managers
  - Park Managers
- Scandinavia's largest fair





# 24 study programmes at LIFE - Faculty of Life Sciences

16 MSc programmes:

- Agricultural Development
- Agricultural Economics
- Agriculture
- Biology-biotechnology
- Clinical nutrition
- Environmental and Natural Resource Economics
- Environmental Chemistry and Health
- Food Science
- Forest and Nature Management
- Gastronomy and Health
- Horticultural Sciences
- Human Nutrition
- **Landscape Architecture**
- Landscape Management
- Parasitology
- Veterinary Science



13 out of our 16 MSc programmes are in English and more will follow





# Landscape Architecture - Specialisation: Landscape Planning

- In the Landscape Planning specialisation you will be learning about the theories and methods of landscape architecture and landscape planning.
- You will be carrying out analyses and drawing up out concrete landscape planning projects



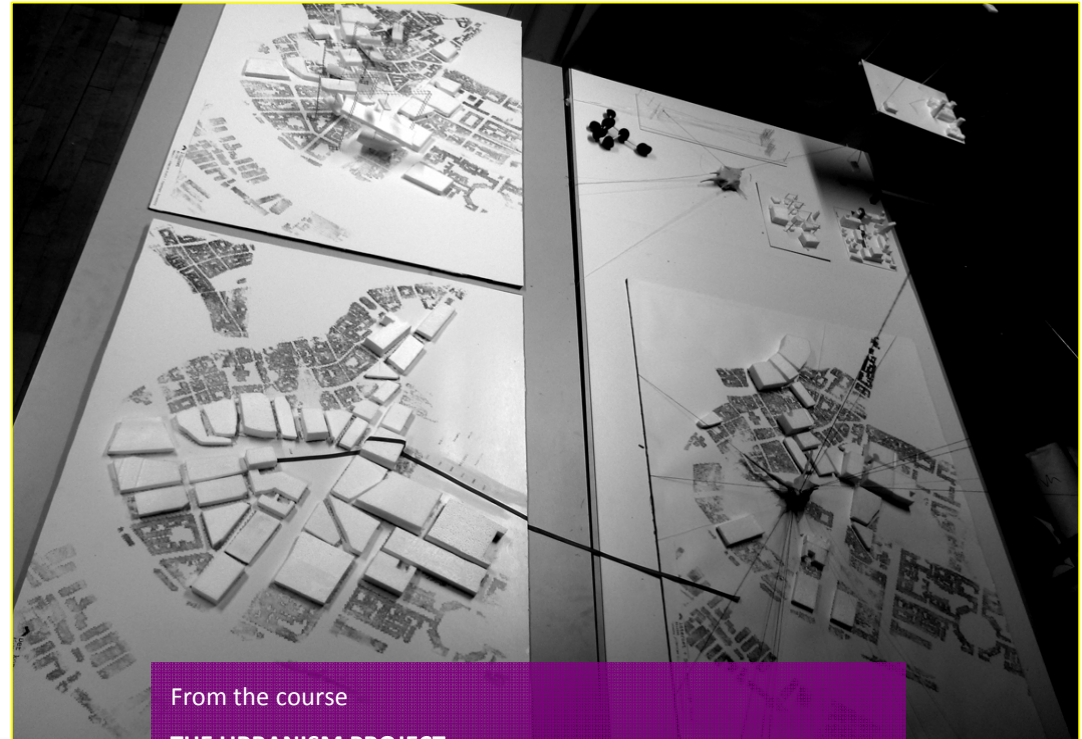
Rikke Malene Wilms  
NEW PUBLIC SPACE AT THE VANGEDE LIBRARY  
Supervisor: Malene Hauxner





# Landscape Architecture - Specialisation: Urban Design

- In the Urban Design specialisation you will be learning about the politics, theory and method of city development.
- You will be involved in actual projects where you will be able to test your knowledge and ideas and have the opportunity to come up with suggestions for further development of, for instance, urban areas and regions.



From the course

**THE URBANISM PROJECT**

Supervisor: Clément Blanchet og Mads Farsø





# Landscape Architecture - Specialisation: Parks Management

- In the Park Management specialisation you will be studying the management of green areas and the wishes and requirements related to the appearance and contents of a park.
- You will learn how parks, urban forests and recreational areas are planned, developed and cared for.
- You will also learn how nature can be used to enhance health.

